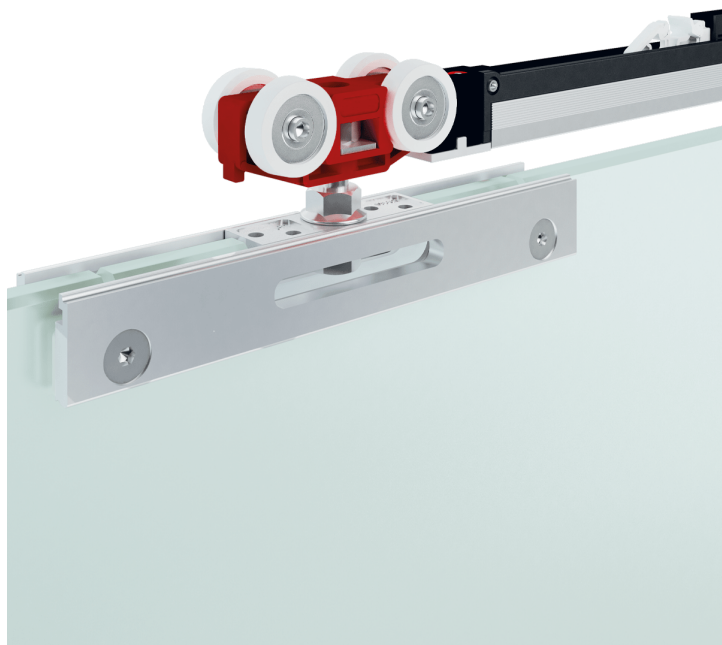
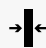





Vetro 24

Accessories for glass doors with drillings and clamp height 24 mm



 8 ÷ 10,7 mm

 Max 80 kg

 10 mm



Vetro 24

Vetro 24 is a sliding system suitable for glass doors with drilling requirements and double clamps at reduced height (only 24 mm).

This system match both with monolithic and laminated glass, with thicknesses from 8-8,7 mm (5/16") and 10-10,7 mm (3/8").

Vetro 24 integrates the new sliding trolleys, with Fluid technology: the movement turns out to be extremely soft, in opening and closing, for a costantly improved user experience.

The Vetro 24 system is very versatile: it can also be used with counter frames.