



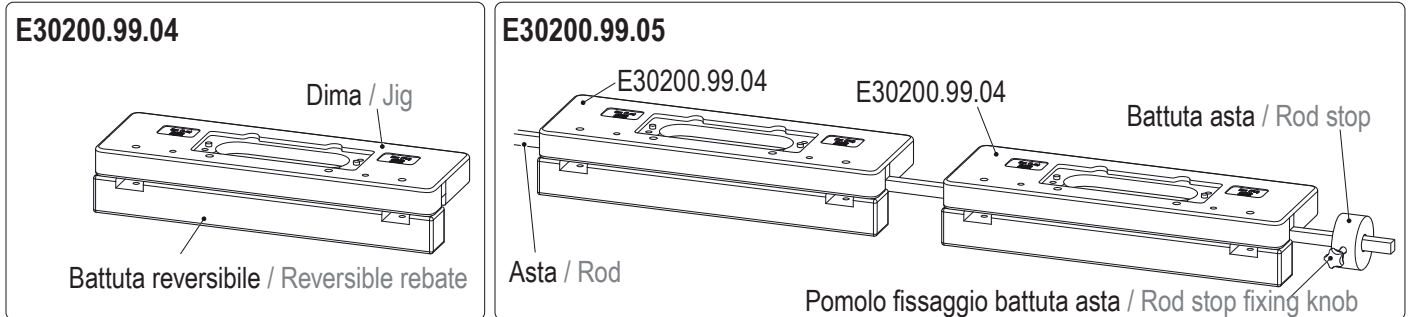
Alban Giacomo SpA

COMPANY WITH
QUALITY SYSTEM
CERTIFIED BY DNV GL
= ISO 9001 =

ISTRUZIONI D'USO / USE INSTRUCTIONS

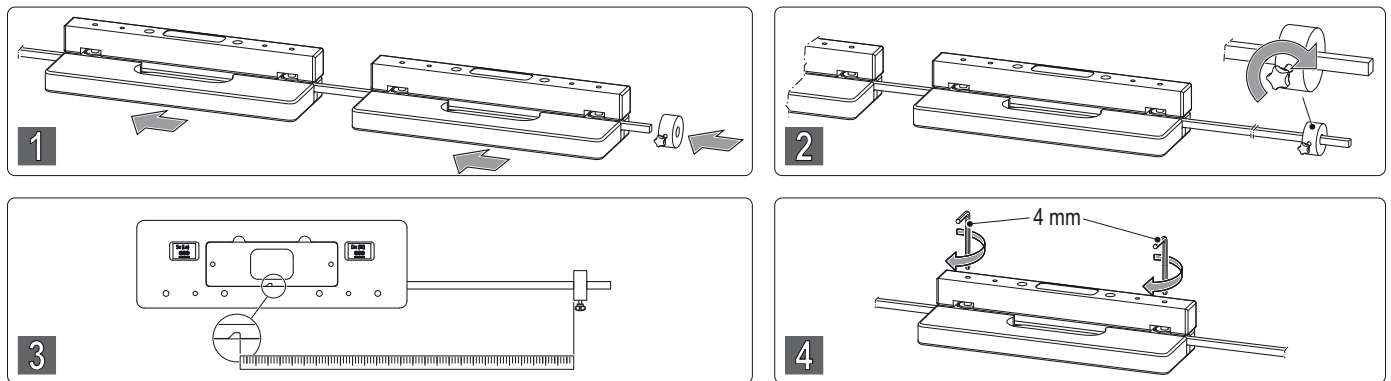
Dima per fresata cerniera / Drilling jig
Eclipse - Eclipse 2.0 - Eclipse 3.0 - Eclipse 3.1

Contenuto dei kit / Kits content



Inseri Adapters		Eclipse	E30200.99.06	Eclipse 3.1 (sp. / thick. 40 mm)	E30200.99.08
		Eclipse 2.0	E30200.99.06	Eclipse 3.1 (sp. / thick. 38 mm)	E30200.99.09
		Eclipse 3.0	E30200.99.07		

Assemblaggio componenti kit dime / Jig kit components assembly



Avvertenze valide per tutti i modelli Eclipse / Instructions for all the Eclipse range



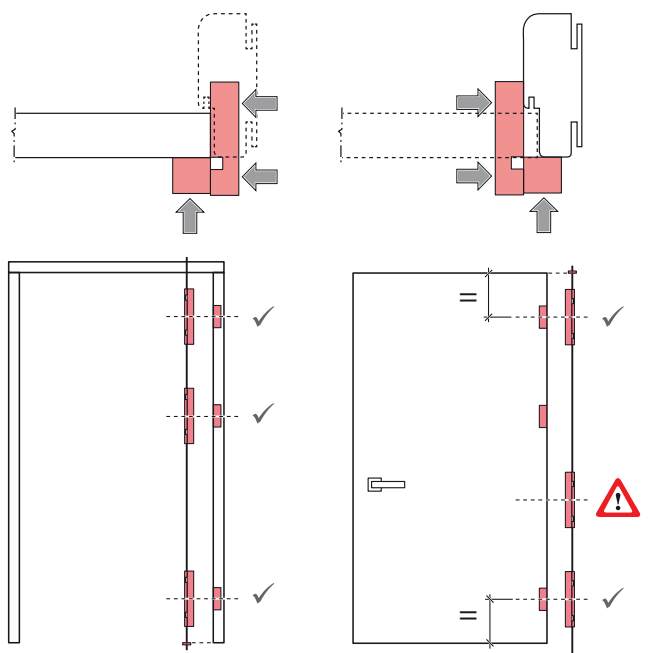
Gli inserti sono predisposti per ottenere 5 mm di aria sotto l'anta.
The adapters are suitable to obtain 5 mm gap below the sash.



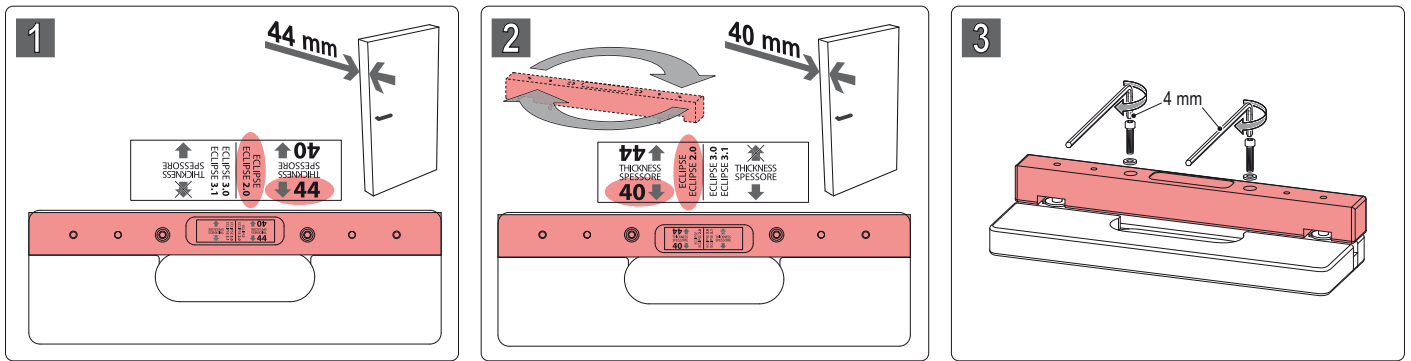
Effettuare la foratura appoggiando le dime alla superficie esterna di anta e telaio.
Drill applying the jigs on the external surface of sash and frame parts.



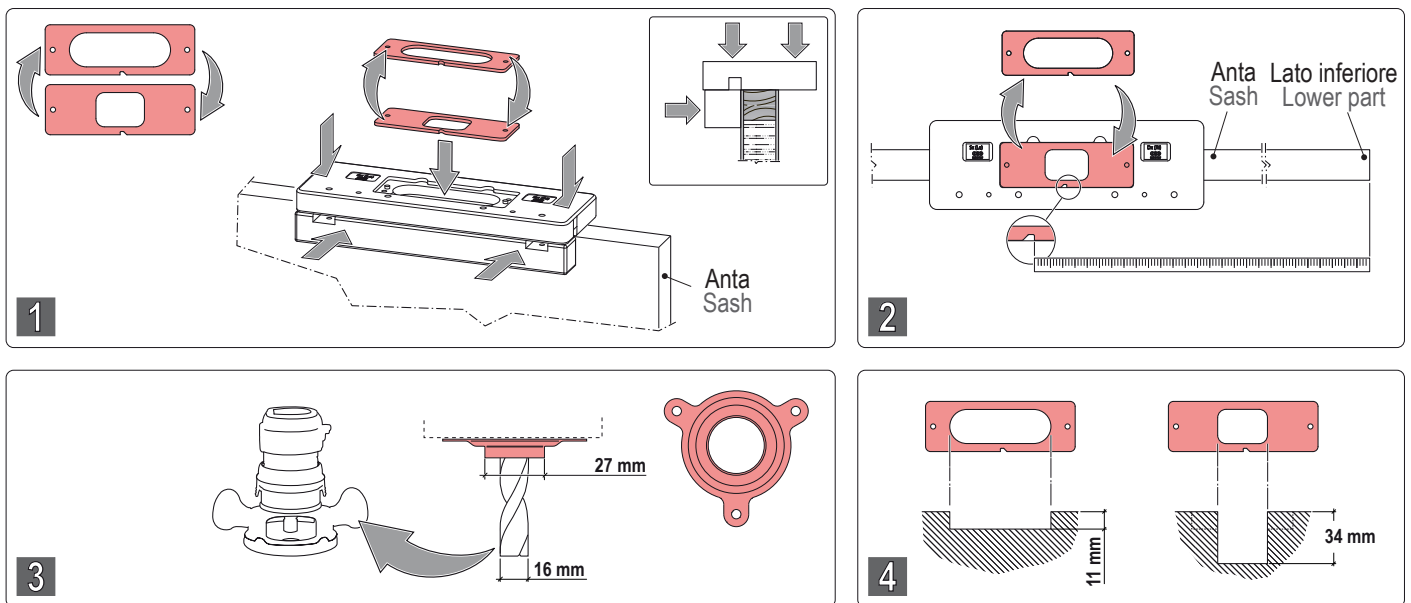
Nel caso di cerniera centrale non simmetrica, la posizione delle dime per la foratura del telaio è diversa dalla posizione per la foratura dell'anta. E' pertanto necessario effettuare lo spostamento delle dime (l'immagine rappresenta un esempio con tre cerniere, di cui una non simmetrica). Per la foratura del telaio posizionare sempre la battuta asta nella parte inferiore del telaio.
In case of asymmetrical central hinge, the jig position for frame drilling is different from the position for sash drilling. Therefore, it is necessary to move the jigs (in the picture there is an example with three hinges where one of them is asymmetrical). To drill the frame, please position the rod rebate in the lower part of the frame.



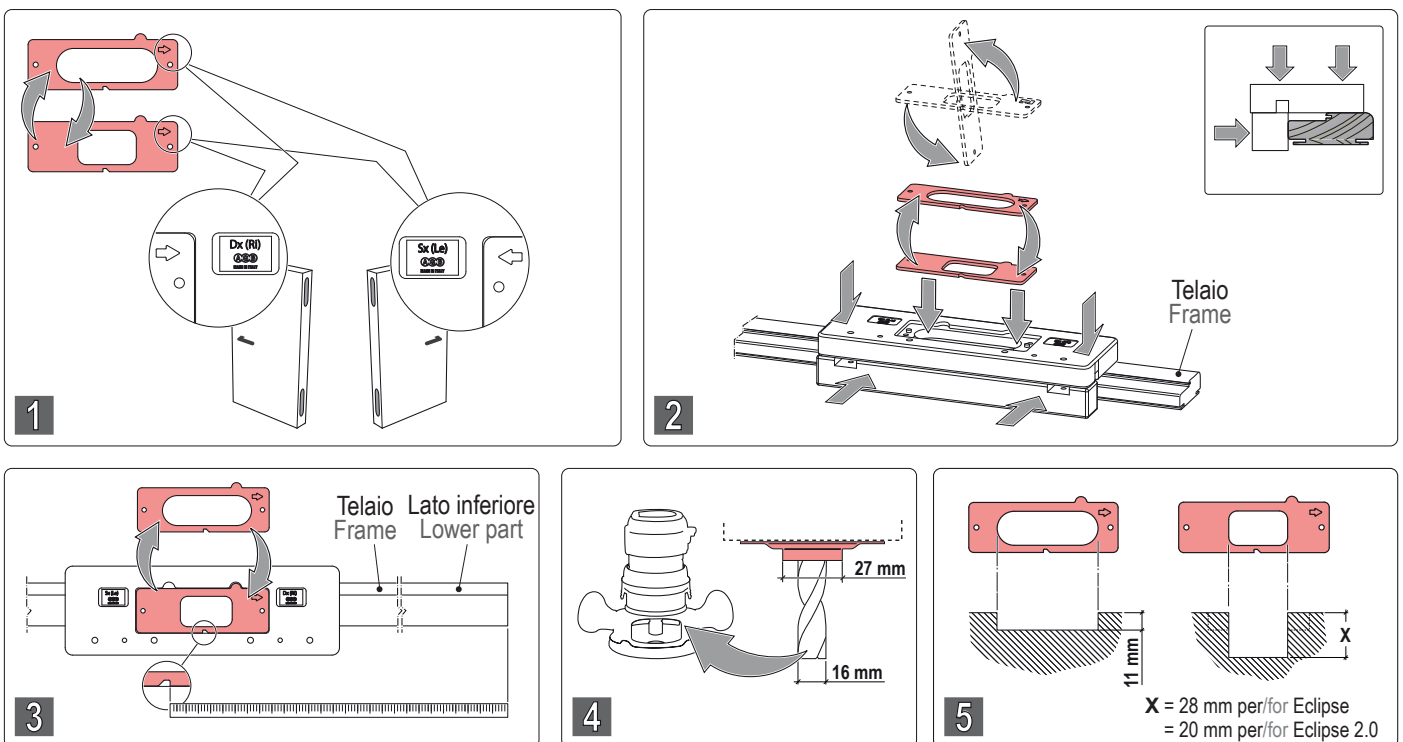
Orientamento battuta reversibile / Orientation of reversible rebate



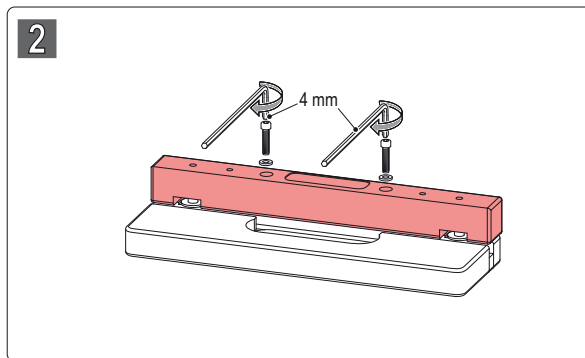
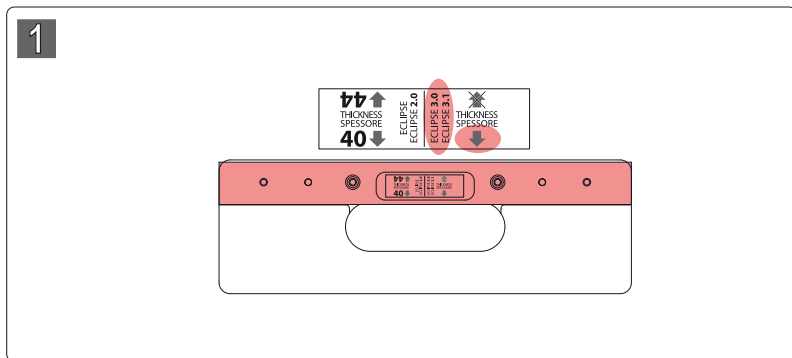
Anta / Sash



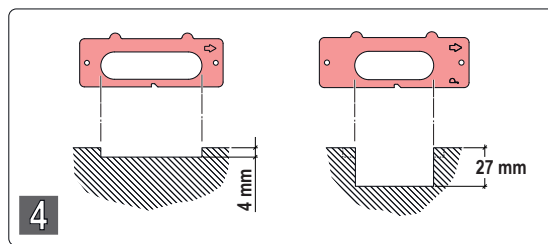
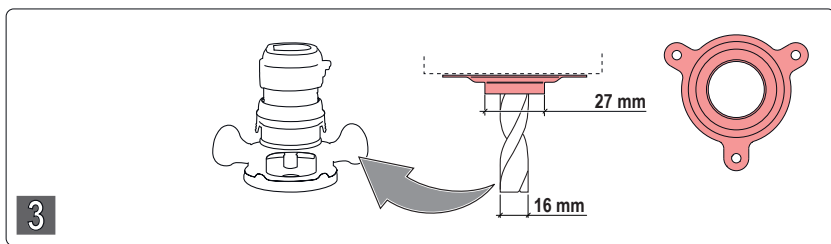
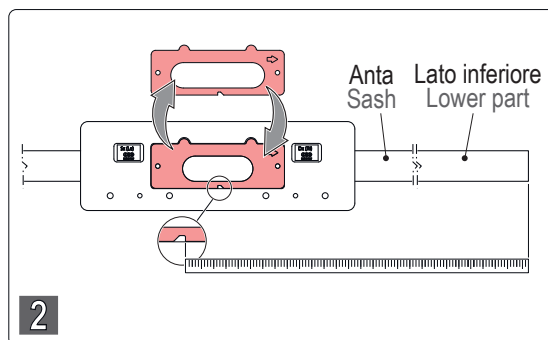
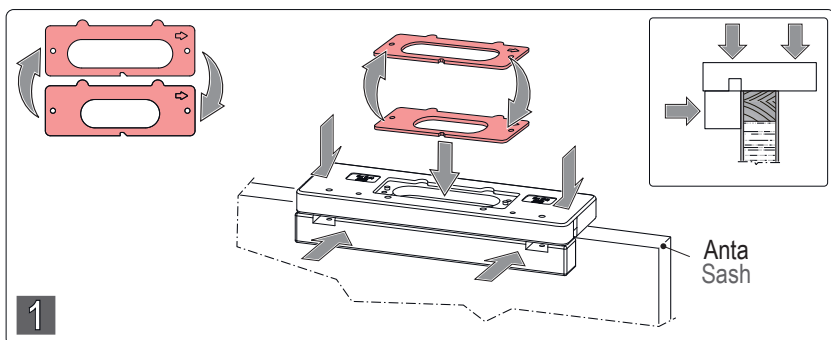
Telaio / Frame



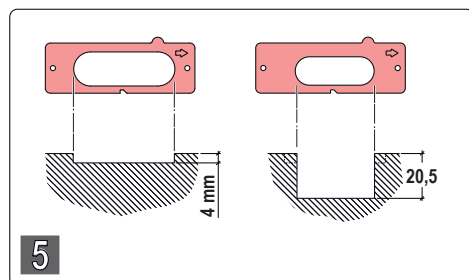
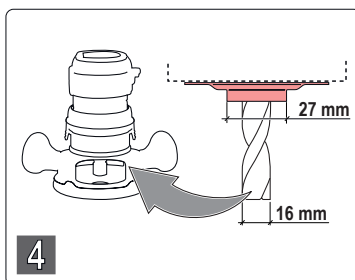
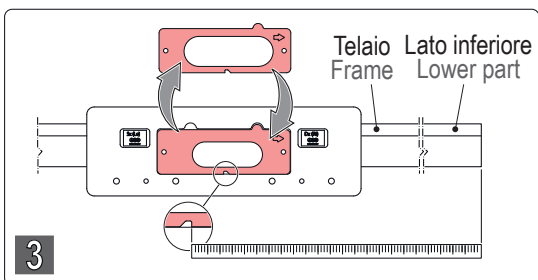
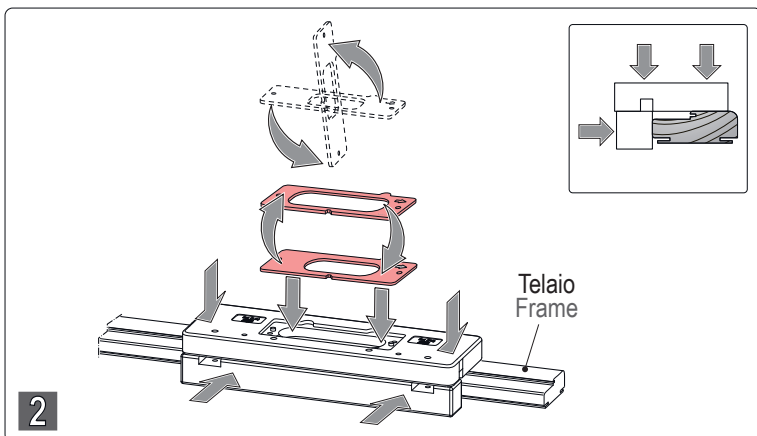
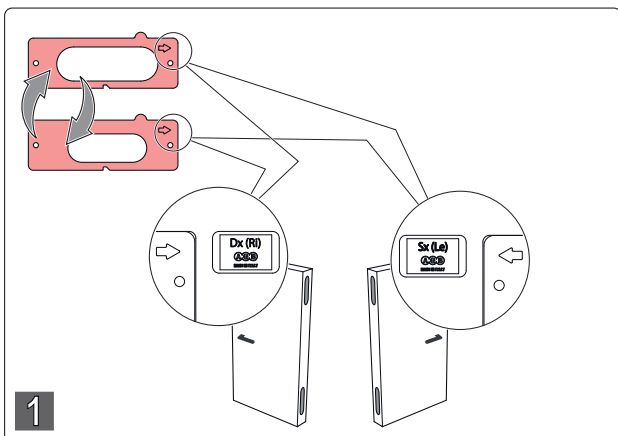
Orientamento battuta reversibile / Orientation of reversible rebate



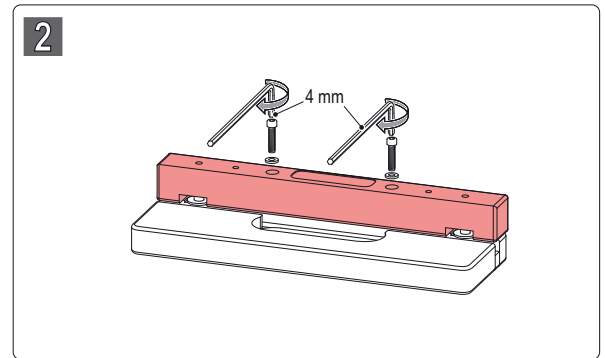
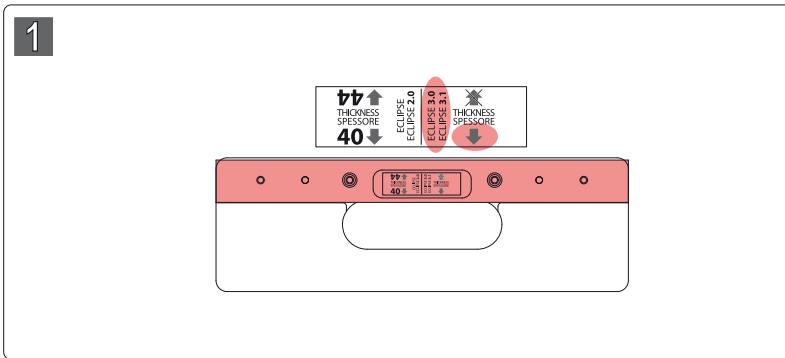
Anta / Sash



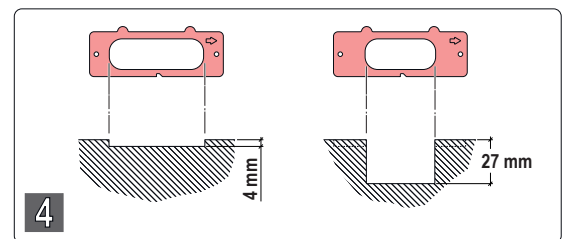
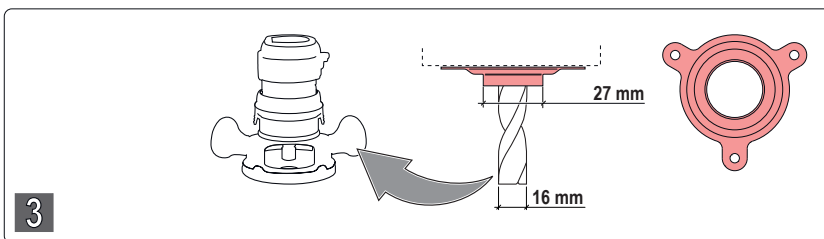
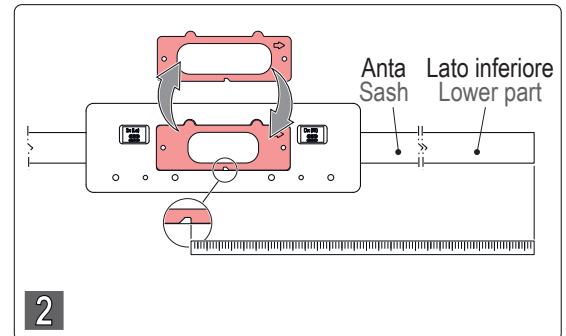
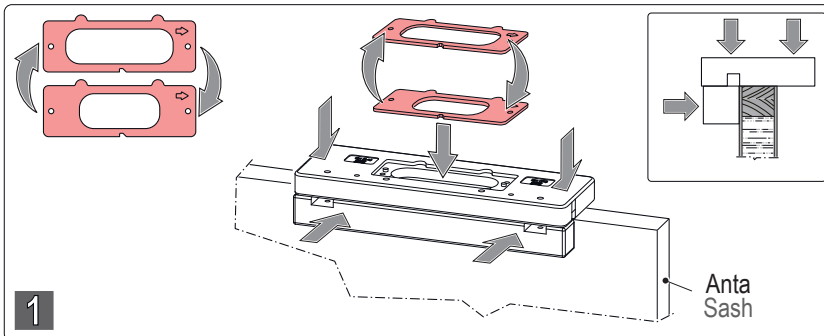
Telaio / Frame



Orientamento battuta reversibile / Orientation of reversible rebate



Anta / Sash



Telaio / Frame

