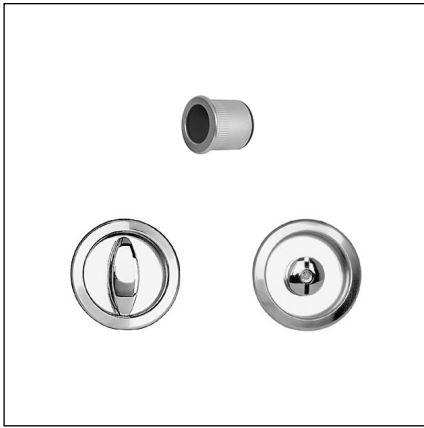


Scivola round - Kit Q - knob/button



Description

Kit with brass or steel flush pull with thumb turn, without key. Notched locking cam on the outside for emergency opening.

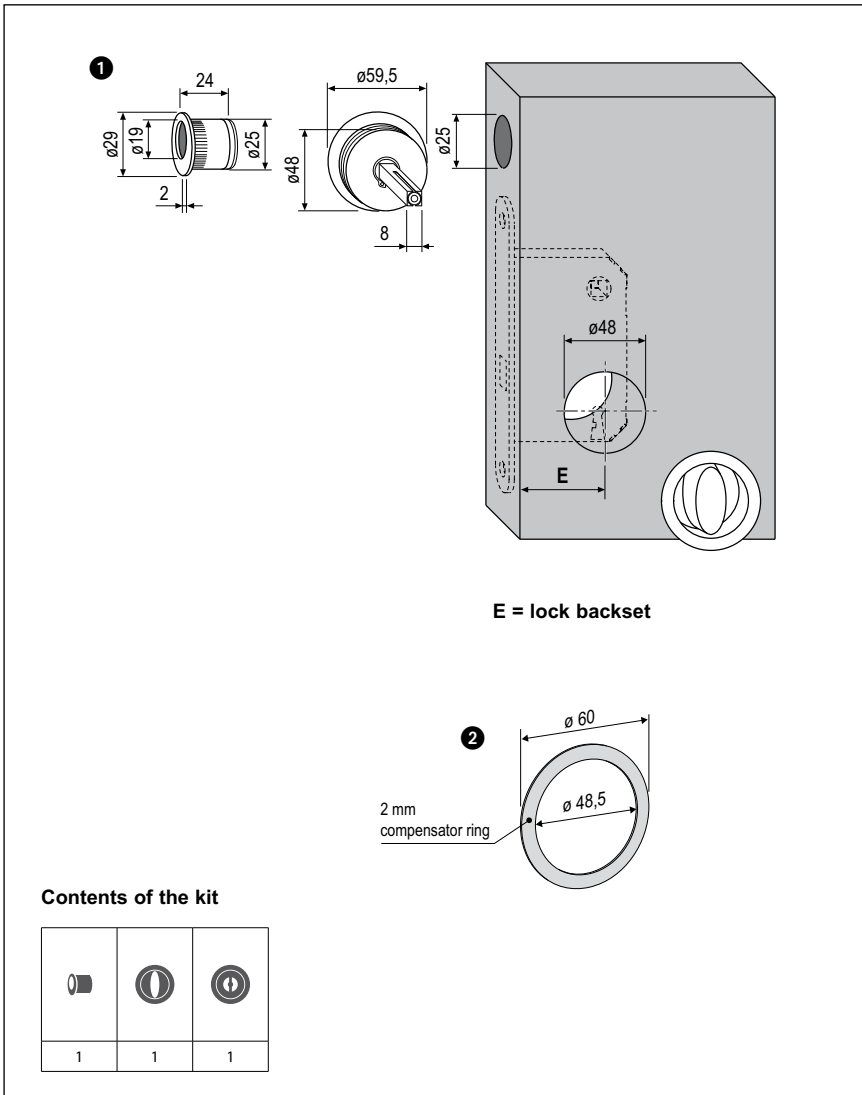
Use

For concealed, sliding timber doors on bathrooms or any room where the door is closed from one side only and does not require a key to lock it. Suitable for panels with a thickness of 30 to 38 mm (B02120.02.XX), from 40 to 48 mm (B01920.02.XX, B01920.12.XX) and from 45 to 53 mm (B02020.02.XX).

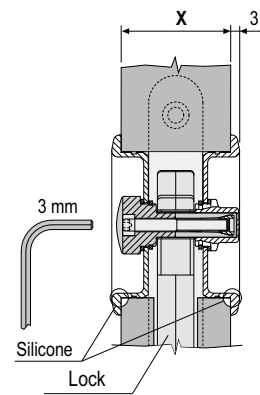
Fastening

The pulls are directly secured by expansion squared spindle, automatically adapting to doors, thickness without any additional screw or plastic striker plate. The thumb turns are secured by embedding, aided by silicone.

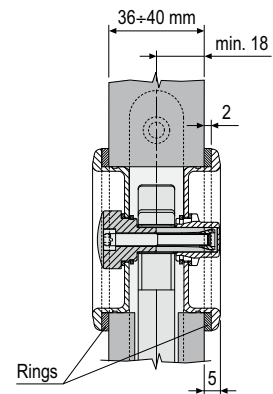
Note. All the kit components come in a single package.



HANDLES ASSEMBLY



Ø48 MM RING TO BE APPLIED TO B1920.02.XX HANDLES FOR 36-40 MM DOOR THICKNESS



Order Specifications

Ref.	Material	Article	Door thickness (X)
1	BRASS	B02120.02.XX	30-38 mm
		B01920.02.XX	40-48 mm
		B02020.02.XX	45-53 mm
	STEEL	B01920.12.XX	40-48 mm
2		B00700.30.XX	

Note. Refer to the price list in force to check the availability of the finishes.