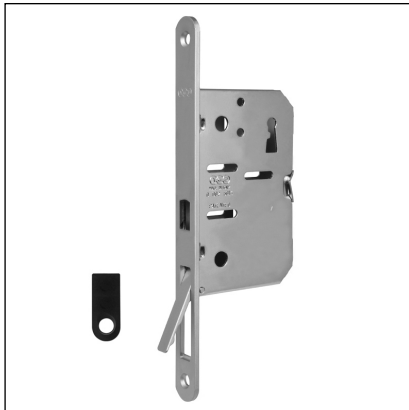
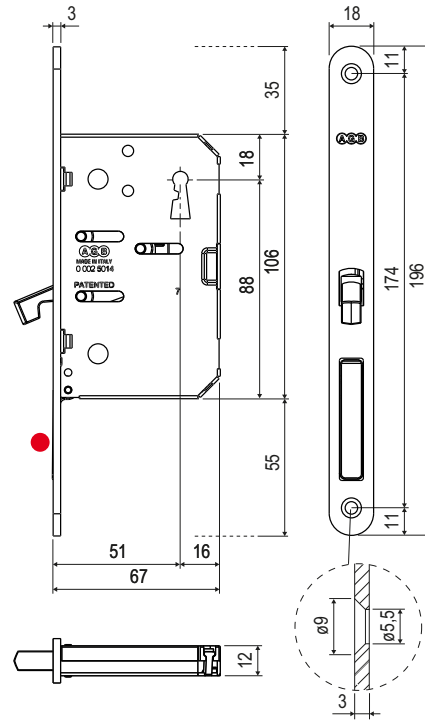


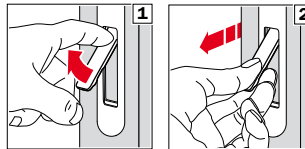
# Scivola T 196 Class - striker for second sash



UNI 9171



● Concealed pull out lever

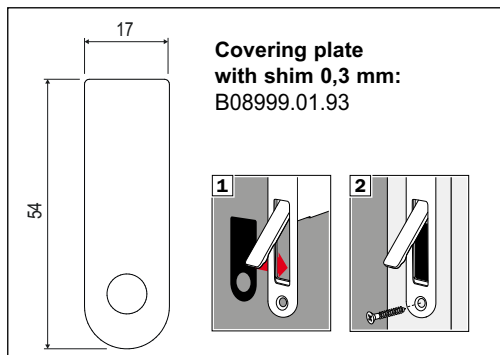


### Use

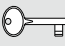
To make the sash sliding, use the pull out lever placed in the lock forend.  
The ergonomic grip allows to overpass the resistance of the systems regarding the brake of sliding doors.

### Fastening

Fasten the lock and striker with four 4x20 mm screws.



### Order Specifications

Material	Article	
STEEL	B08968.00.XX	 1

**Note.** Refer to the price list in force to check the availability of the finishes.