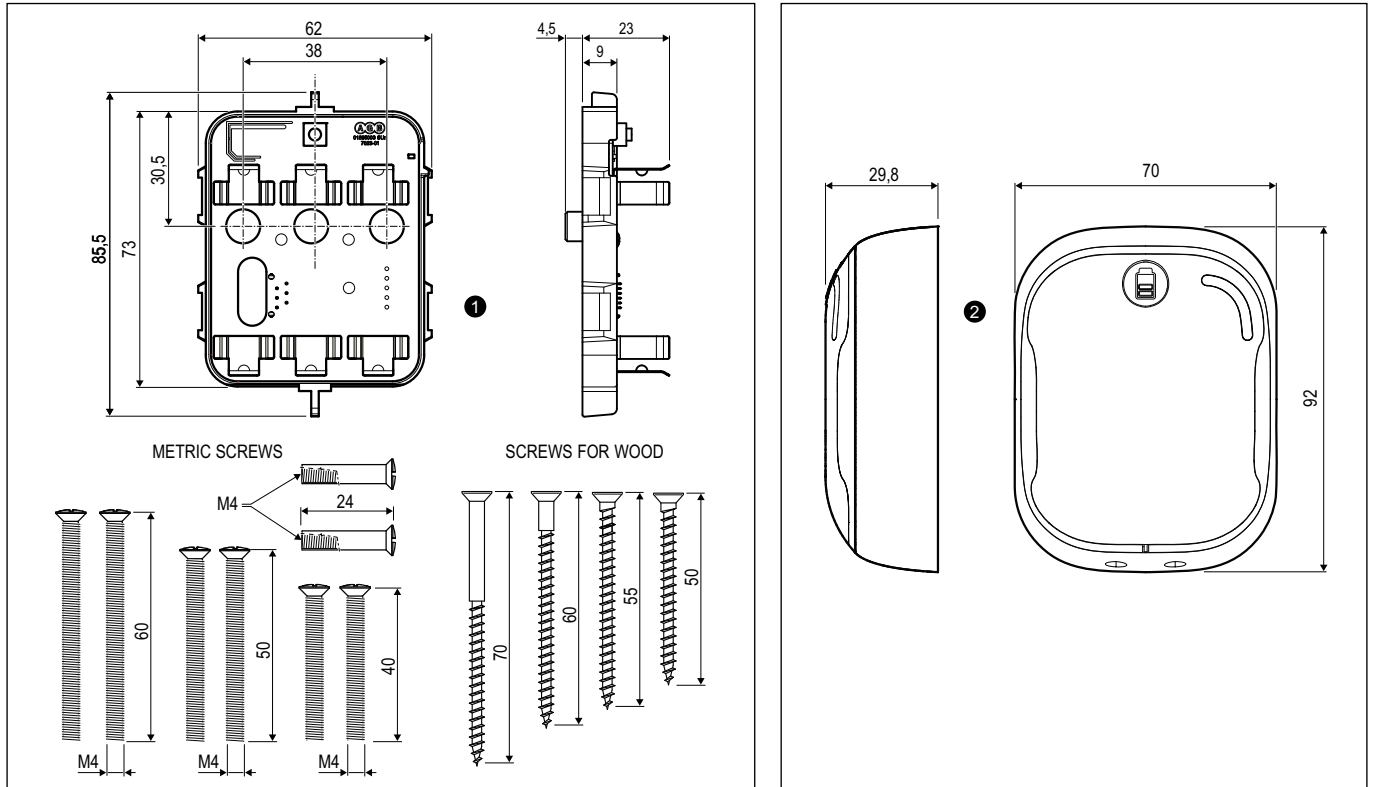


Opera iControl - Battery holder and cover



Description

Battery holder with screws ① and covers ② for Opera iControl lock.

Installation

Fix the battery holder to the washer with the provided fastening screws, choosing the right length (see the tables).

WARNING: Don't fasten the screws with excessive force in order to avoid damages to the thread on plastic components.

Use AGB washers			
Door thickness	Washer	Screw	Screw length
Y=42÷45	ø4x55 mm		
Y=45÷47	ø4x60 mm		
Y=47÷50	M4x50 mm		ø4x65 mm*
Y=50÷52			ø4x70 mm
Y=52÷55			ø4(4,5)x75 mm*
Y=55÷57			ø4(4,5)x80 mm*
Y=57÷60	M4x60 mm		ø4(4,5)x85 mm*
Y=60÷62			ø4(4,5)x90 mm*
Y=62÷65			ø4(4,5)x95 mm*
Y=65÷67	M4x70 mm*		ø4(4,5)x100 mm*
Y=67÷70			
Y=70÷72	M4x70 mm*		
Y=72÷75			
Y=75÷77	M4x80 mm*		
Y=77÷80			
Y=80÷82	M4x80 mm*		
Y=82÷85			
Y=85÷87	M4x80 mm*		
Y=87÷90			

* Not included

Use the washers present in the market					
Door thickness	Y=40÷50	Y=50÷60	Y=60÷70	Y=70÷80	Y=80÷85
	2 x M4x40 mm	2 x M4x50 mm	2 x M4x60 mm	2 x M4x70 mm*	2 x M4x80 mm*

* Not included

Order specifications

Article	Description
① B61010.06.01	Battery holder
② B61010.13.XX	Cover