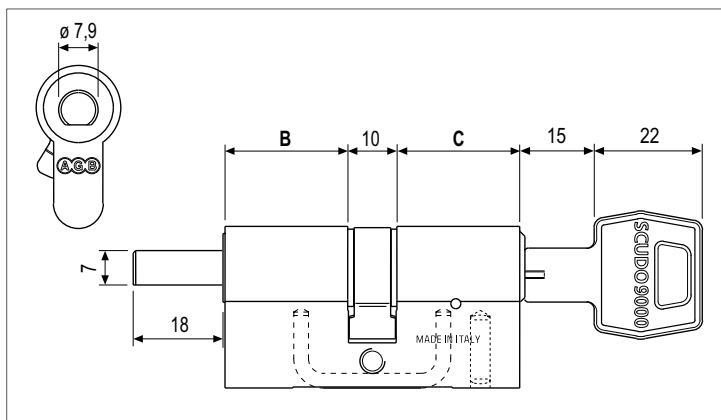
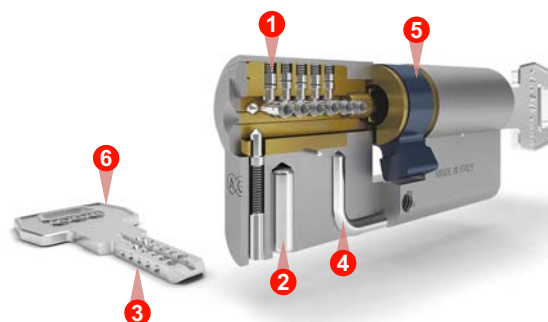


# Mod. Scudo 9000, 18 mm tang - key



### Characteristics

- Matt nickel plated brass cylinder with 18 mm tang and flat reversible nickel silver key.
- Designed on the basis of the sixth intrinsic security class according with the regulation EN 1303.
- 17 active and passive pins made of hardened stainless steel. **1**
- 1 hardened steel anti-drill pin. **2**
- 5 keys and a duplication card. **3**
- Stainless steel U-shaped insert prevents the extraction of the elements in case of break-in attempts. **4**
- Anti-pull cam in sintered steel (23° inclination). **5**
- Grip can be personalised with different coloured covers. **6**
- Used with the turn knob with dowel art. C00645.00.XX.
- Nickel plated fastening screw, M5x76 mm.



**Note.** The image is indicative only.

### Cylinder classification



EN 1303:2015 - ICIM 0039CS								
1	6	0	B	0	C	6	D	

ANTI-PICKING: Pass

**Note.** The product certifications ICIM are available at the website [www.agb.it](http://www.agb.it)

**Note.** For further information, see the introduction called "Comparative table of cylinders according with the regulations EN 1303 and EN 1627" in the cylinders technical catalogue.

### Cylinder choice guide

Antiburglar						
Systems						
Durability						
Finish						

**Note.** For further information, see the introduction called "Cylinder choice guide" in the cylinders technical catalogue.

### Matt nickel plated brass

Article	Pins	B	C
C92416.XX.XX	17	XX	XX

**Note.** Refer to the price list in force to check the availability of measures and special finishes on demand.